

Technical Data Sheet

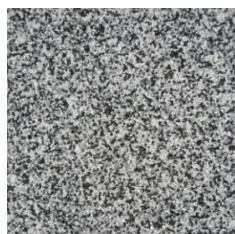
Traxite Colourfine Colour and Mix Ratio Chart



Keyz



Mamba



Silhouette



Checker



Pitch



Gravel



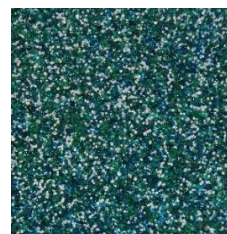
Galaxy



Lava



Bering



Orion



Bass



Raglan



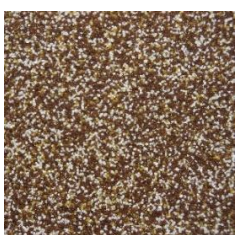
Siene



Huka



Whio



Rosinite



Autumn



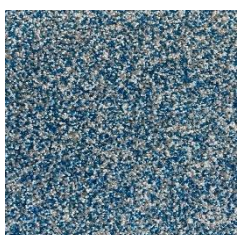
Bauxite



Basalt



Kalahari



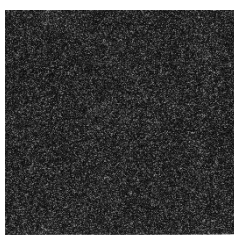
Riverbed



Crystal Blue



Metallic



Spark



Baja

A range of colours may be obtained by various colour blends.

The colours above are suggestions only and is not limited to a range of "pre-blended" colours

The chart below shows the mix ratio of these colours and of course may be altered slightly or changed completely to suit the requirement of the installation.

TRAXITE COLOURFINE MIX RATIOS:

	White	Grey	Red	Black	Yellow	Green	Blue	Brown
Keyz	80			20				
Mamba	45	45		10				
Silhouette	50	25		25				
Checker	50			50				
Pitch	10	45		45				
Gravel		50		50				
Galaxy	20			80				
Lava			60	40				
Bering		5		5			90	
Orion	20					40	40	
Bass	30	20					50	
Raglan		80		5			15	
Siene	10					20	70	
Huka	40			20		40		
Whio	11	66				22		
Rosinite	30				10			60
Autumn	34	33						33
Bauxite	34				33			33
Basalt	13	25		12	50			
Kalahari	30			20	40			10
Riverbed	33	33					33	
Crystal Blue	33			33			33	
Metallic	55			45				
Spark	25			75				
Baja	40			20				40

Date: Sept 2021
Replaces: march 2021

Allnex Construction Products, a Division of Allnex New Zealand Ltd
 Auckland - 14 Industry Road, Penrose, phone: 09-583-6544.
 Hamilton - 18 Somerset Street, Frankton, phone: 07-847-8658.
 Wellington - Unit 9A, 4 Glover Street, Ngauranga Gorge, phone: 04-240-0305.
 Christchurch - 112 Carlyle Street, Sydenham, phone: 03-366-6802.
 Customer Service: 0508-882-288 cs.constructionnz@allnex.com
www.allnexconstruction.com



DISCLAIMER: This information appearing in this Document (Details) concerning the product which is the subject of the Document (Product) is either based on present technical knowledge and tests done by allnex or tests done by, and data supplied from third parties including you, the customer. Since the actual use by you and by others of the Product is beyond the control of allnex, no warranty or representation, express or implied is made by allnex regarding the suitability for such use, nor does allnex accept any liability arising out of the use by you of other products or materials, whether third party or not, that may be referred to in this Document. allnex recommends that you carry out your own tests as to the suitability of the Product for your purpose, regarding which you accept full responsibility. In addition, if any of the Details appearing in the Document are based upon tests done by, and/or data supplied by any third party, allnex provides no warranties or representations in connection with those Details and you, the customer waives any right you may have against allnex in connection with the accuracy, completeness or otherwise of the Details. The information in this Document is not to be construed as absolutely complete or accurate since additional information may be necessary or desirable when particular or exceptional conditions or circumstances exist or because of applicable laws or government regulations affecting use of the Product. allnex does not provide any warranty or representation to you that the Product does not infringe the intellectual property rights of any third party. All orders accepted shall be subject to the standard conditions of sale of allnex which are on the back of our invoice. In accepting the Product, you, the customer acknowledge and agree: a.) The Product is or may be of a hazardous nature and that you, the customer, are responsible for the disposal of the container housing the Product in accordance with the requirements and regulations of the relevant supervising government. b.) The Product has a limited shelf life and must be stored strictly in accordance with the guidelines and specifications related to it. c.) Where the Details relate to Product tested by allnex, those Details are indicative only, regarding which there may be batch to batch variation. d.) allnex gives no warranty or representation as to the applicability for the particular use by you, the customer, of the Product and you the customer shall be responsible for ensuring that the Product is fit for your intended use. e.) allnex's liability for breach of any term, condition, guarantee or warranty (express or implied and concerning the information in this Document or the Product more generally) including any liability for direct or indirect consequential loss (including indirect loss of profits), is limited to the maximum extent permitted by law and, at allnex's election, to either replacing or repairing the goods or paying the cost of replacing or repairing the goods, or in the case of services, supplying the services again.